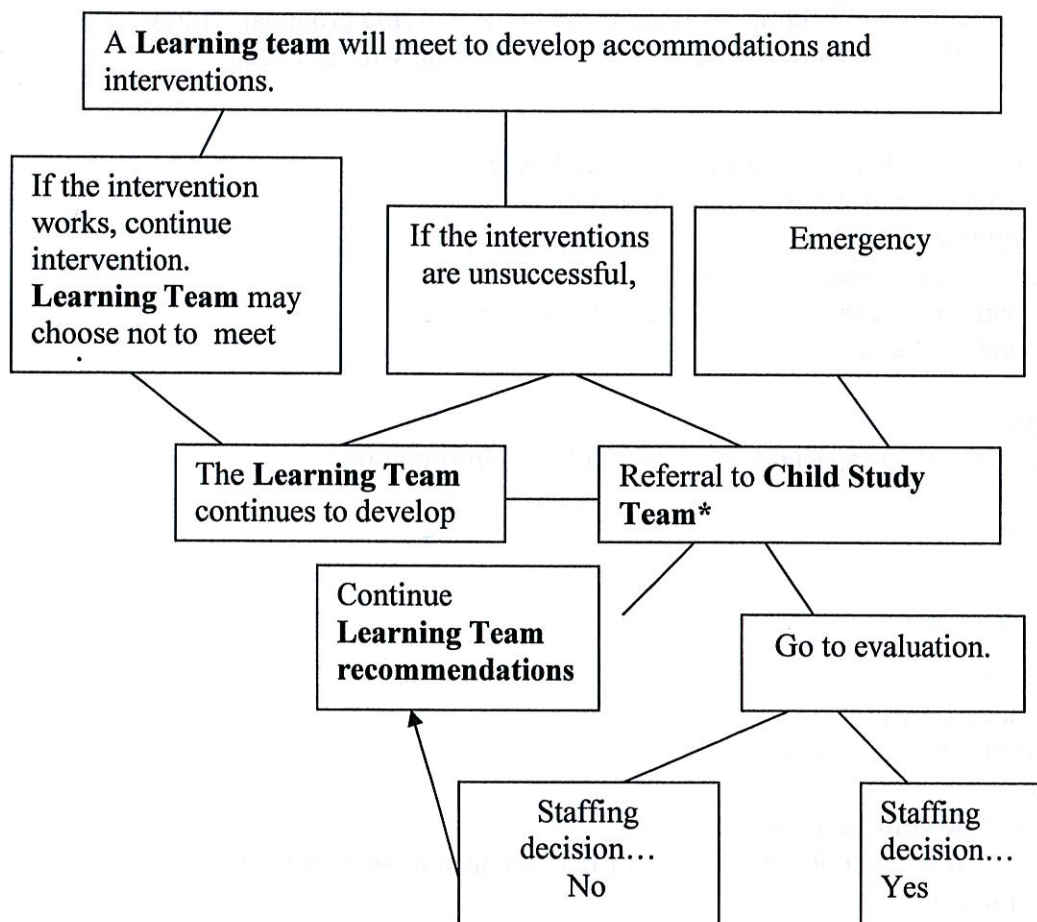


From Learning Team to Success.....the Crestview way.



***Child Study Team** – The purpose is to make decisions when the Learning Team seems stalled. The composition is principal, AEA (exfacto), special education teachers, and the teacher(s) bringing the case to the team. The classroom teacher will bring all relevant paperwork and review the case with team. See agenda and additional information below.

How Child Study Works

Students are referred to the Child Study Team through the building principal. Before the team meets, the student, the concern and the teacher presenting will be shared.

What to bring

If you are bringing a student to the team you should have:

1. Learning team paperwork with interventions
2. Longitudinal ITBS data
3. Longitudinal Benchmark data
4. Classroom assessments and samples for all areas of concern
5. Copies for the team

Who may attend

Classroom teacher and any special teacher with relevant information

The agenda

1. History
2. Strengths
3. What works
4. Concerns
5. What has not worked
6. Brainstorming/Problem solving
7. Next step
 - a. Continue with Learning team work
 - b. Level III intervention which may or may not lead to assessment for entitlement
 - c. Gather more information which may include a screening for new interventions or instructional strategies
 - d. Conduct a DS meeting
8. Set a follow up date

It is very important that we do not see the Learning Team work as the first step toward Special Education.

Summary sheet for presentation to Child Study Team

History:

Strengths:

What works:

Concerns:

What has not worked: