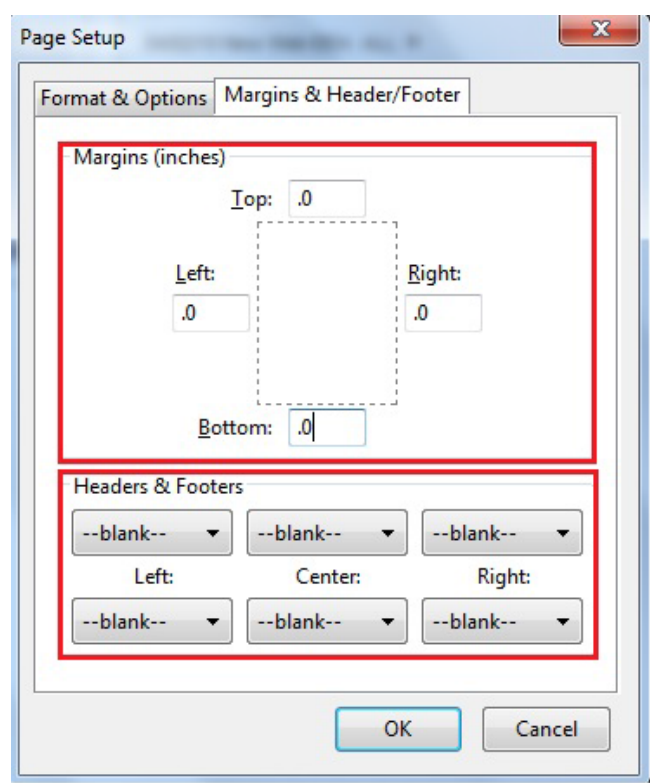
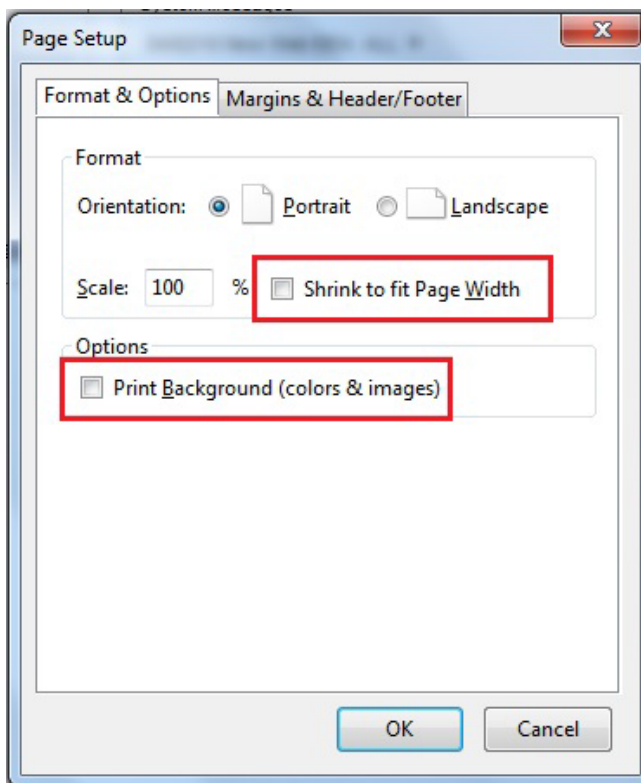
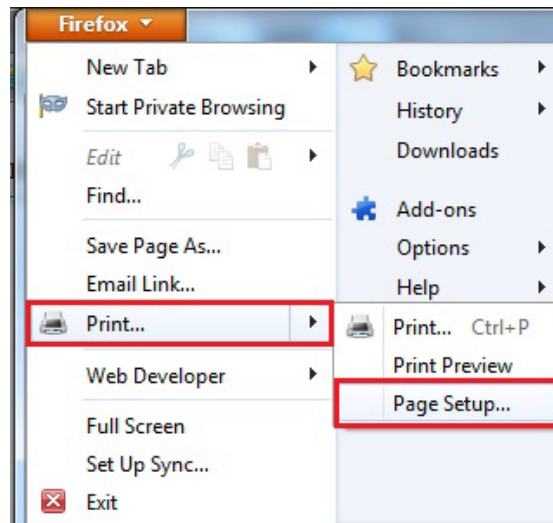


Firefox 16.0.x and above for Windows

Page Setup

Click on 'Firefox', select 'Print' and then select 'Page Setup'.



On the Format Options tab:

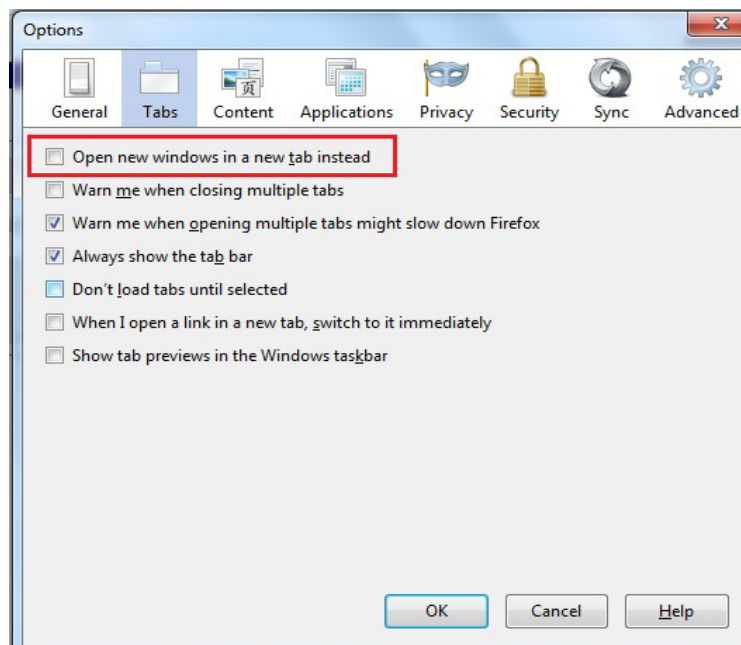
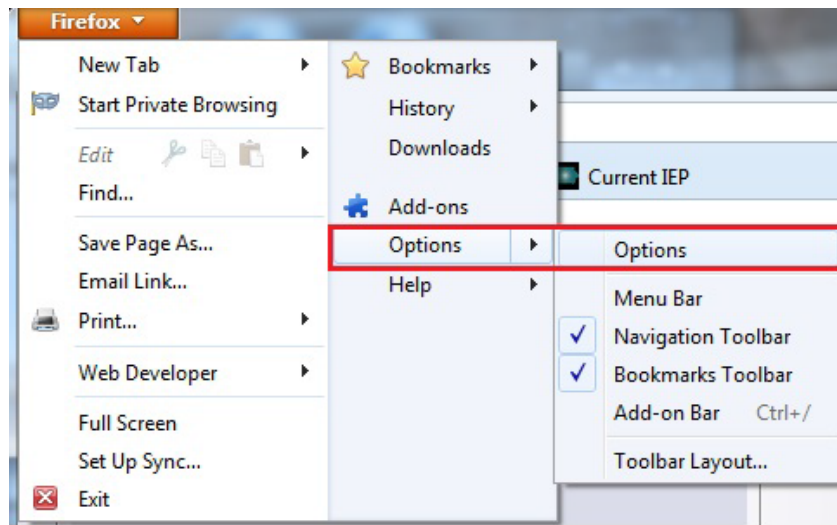
- Un-Check 'Shrink to fit Page Width'
- Un-Check 'Print Background (colors & images)'

On the Margins & Header/Footer tab:

- Set all margins to .3"
- Set all Header & Footer content options to 'Blank'. This will prevent the date, web page URL, page number, etc from printing at the top and bottom of your printed pages.

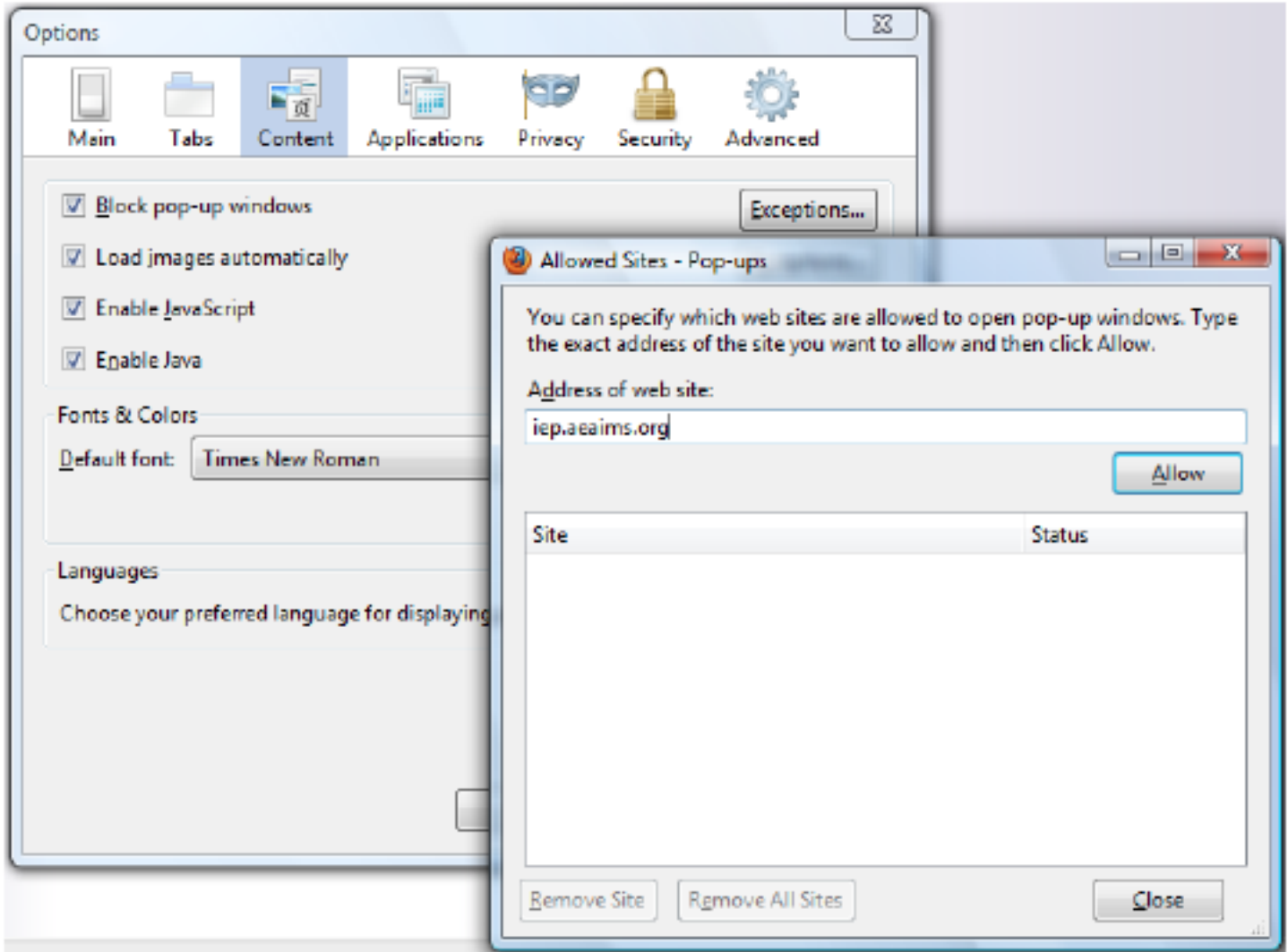
New Window Tab Control

Click on 'Firefox, select 'Options' and then 'Options' again. On the Options screen, select 'Tabs'. If the box for 'Open new windows in a new tab instead' is checked, it must be unchecked to navigate properly within the IDEA applications.



Popup Windows, Load Images

On the Options screen, click on 'Content'. On the Content screen, all checkboxes on this screen should be checked. For pop up window control, the 'Block pop-up windows' box should be checked and an allowed site entry made for iep.aeaims.org as shown below. Use the 'Exceptions' button, and then you must type in the site address (iep.aeaims.org) or copy and paste from the URL of the login page. Next, click on 'Allow' to add our site on the list of sites permitted to utilize pop up windows. In the Web IEP application, all Banks and the Print Menu utilize pop-up windows.



Load Images Automatically

The 'Load images automatically' checkbox should be checked. If you wish to not allow 'Load images automatically' (indicated by unchecking this box), you will also need to enter an 'Exception' allowed site for iep.aeaims.org or you will not see navigation buttons in the IEP application.

Cache Control

For the IowaIDEA application, caching is an 'undesirable' browser feature. Your cache settings control the 'storing' of pages you have accessed previously, so your browser doesn't need to download a previously accessed page every time you navigate to that page. We don't want that to happen because anytime you save a page (Page A, Page B, etc.) we want that 'new' data to reappear should you go back to that page. So we need to control what gets cached and what doesn't get cached.

There are many options available to control cache in Firefox 16 and above. The primary choices we want to control are Cache and Cookies. To get the desired options, we need to set FF to 'Use custom settings for history'.

For cookie control, you have an option to a) check 'Accept cookies from sites', which will accept cookies from every site you browse to, or b) not check 'Accept cookies from sites' and enter an 'Exception' for iep.aaaims.org to allow just our site to store a cookie on your computer. Our IowaIDEA cookie stores the last district and building you accessed and some other information used to assist your navigation within the application.

For cache control we recommend checking the 'Clear history when Firefox closes' and then use the 'Settings' button to refine what happens when you exit Firefox. On the 'Settings for Clearing History' window, make sure 'Cookies' is unchecked and 'Cache' is checked.

