



Changing Your Default Browser to Mozilla Firefox


1. Click the Windows Orb button .
2. Click on **Default Programs** in the *right-hand* column.
3. Click on the **Set your default programs** link.
4. Then in the *Set your default programs* window, once it's loaded, click on **Firefox**.
5. In the *right-hand* column, click on the  [Set this program as default](#) link.
6. Click on **OK**.
7. Close the window.

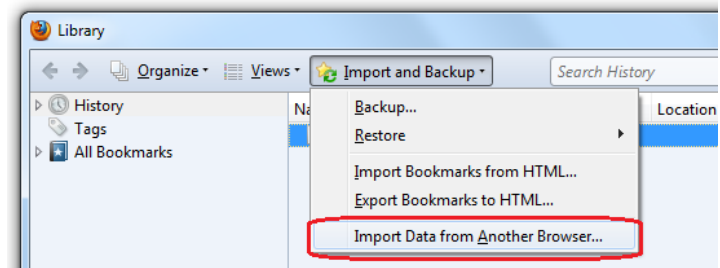
Helpful Hint:

Sometimes just opening up a different browser will prompt you to allow it to be the default browser.

Import Bookmarks from Internet Explorer

Firefox lets you import your Favorites (called Bookmarks in Firefox), settings and other data from Internet Explorer, saving you from having to configure many things yourself.

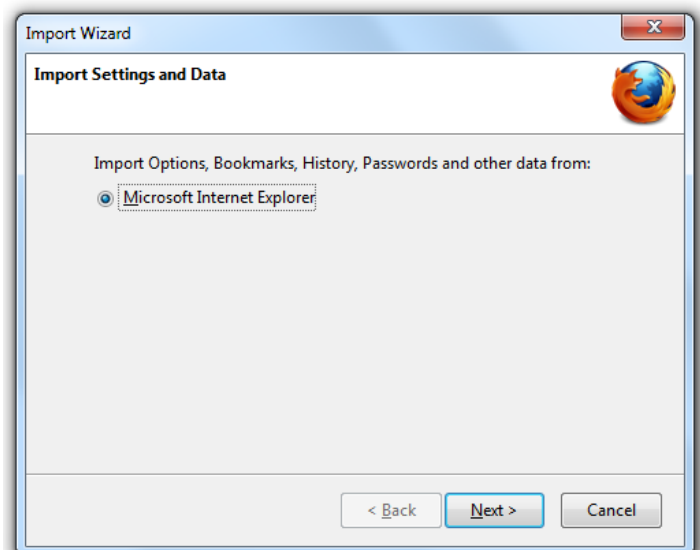
1. Click the **Bookmarks** button  on the right side of the navigation toolbar and select **Show All Bookmarks** to open the Library window.
2. In the Library window, click on the **Import and Backup** button, then click on the **Import Data from Another Browser** link from the drop-down menu.



Helpful Hint:

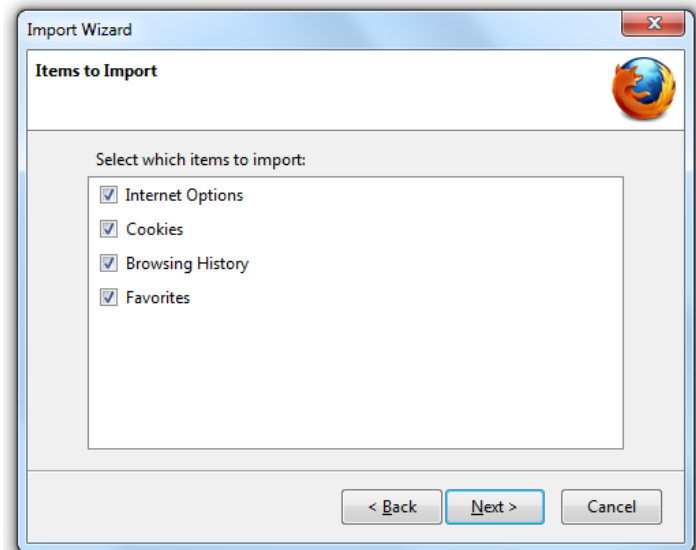
If **Import Data from Another Browser...** is disabled (grayed out), you might be in [Private Browsing](#) mode. Close the Private Browsing window and try again.

3. In the Import Wizard window that appears, click **Microsoft Internet Explorer**, then click **Next**.



4. Firefox will list the types of settings and information it can import. Check ☒ the items you want to import.

- **Internet Options:** General settings, including your home page. Since Firefox and Internet Explorer have different features, Firefox won't be able to import all of your settings.
- **Cookies:** Small bits of information stored on your computer by some websites that are used to keep you logged in, store your options, or do other things.
- **Browsing History:** Information on the sites you have visited.
- **Favorites:** Web pages you have saved in your Internet Explorer favorites (BE SURE THIS ONE IS CHECKED).



5. Click on the **Next** button.

6. Click **Finish**. The items you selected should now be imported.

- Your imported favorites will appear in the Bookmarks menu in a folder named **From Internet Explorer**.

